

CB580 Shipping Container

Specification

Model:	CB580
Dimensions:	580*210*215cm
Color:	White
Window:	Concession windows, with gas struts
Electrical:	220V/50HZ
Net Weight:	2,600KG
Material:	Frame: Galvanized steel Exterior wall: Corrugated steel Insulation: 25mm polyurethane spray foam Interior wall: ACM Workbench: 201 stainless steel Floor: Non-slip aluminium checkered floor
Electrical System:	Electrical panel board 32A Circuit breaker AU power sockets 15A generator receptacles AU Electrical wires Interior light bars
Water Sink Kits:	2 compartment water sinks Commercial faucet for cold & hot water Floor drain
Water Supply System:	24V water pump 25L food-grade clean water tank 25L food-grade waste wastewater tank
Water Sink Kits:	Water sinks Commercial faucet for cold & hot water Floor drain

Accessories:	<ul style="list-style-type: none"> Keys Nameplate A/C unit Stainless steel A/C unit cage Stainless steel propane tank cage Door stop Flip down stainless steel serving shelves
Kitchen Equipment:	<ul style="list-style-type: none"> Front stainless steel workbench with cabinets Rear stainless steel with back splash Electric fryer Electric griddle Electric grill Gas stove with 4 heads Electric oven Dish washer 3m exhaust hood with fire suppression system 400L under-bench fridge Salad prep fridge, with 18*1/9 pans
Warranty:	1 year warranty for free
<p>For more information on this model, such as size options, pricing, standard configurations, customization and upgrades, production time, delivery terms, etc., please email sales@etofoodcarts.com. Our sales agent will contact you within a day or even sooner to address any inquiries you may have.</p>	

etodevice

Details



- Front -



- Front -



- Side -



- Side -



- Door -



- Inside -



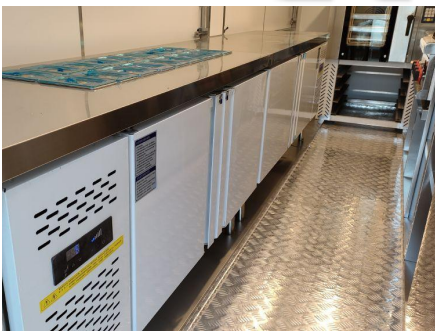
- Inside -



- Kitchen Equipment -



- Kitchen Equipment -



- Fridge -



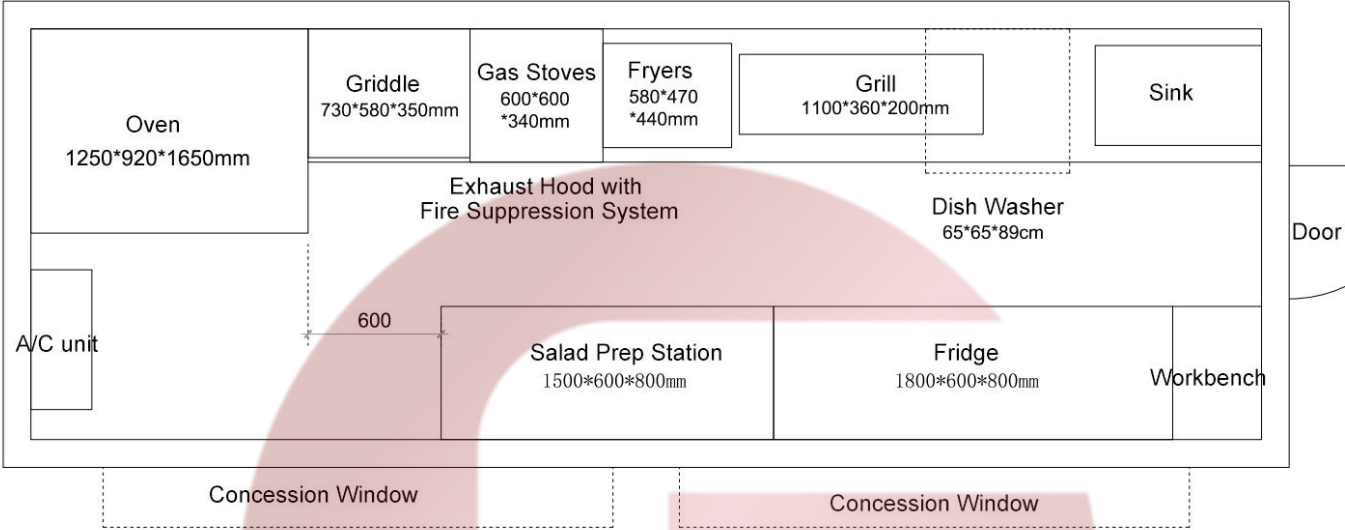
- Sink -



- Production -

Floor Plan

Model: CB580, Dimensions: 580*210*220cm, Color: White



etodevice

Design

